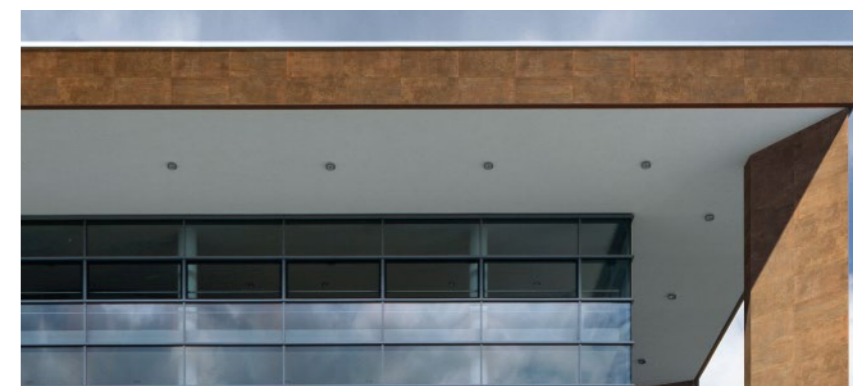


**METAL** style

# METAL style

CORTEN







Corten Nat. Rett.  
60x120 23<sup>5/8</sup>" x 47<sup>1/4</sup>"

**CORTEN**





**CORTEN**

Corten Nat. Rett.  
60x120 23<sup>5/8</sup> x 47<sup>1/4</sup>"



**COLORI E FORMATI**

Colours and Sizes | Couleurs et Formats | Farben und Formate | Colores y Tamaños | Цвета и Форматы



9,5 mm.



**Naturale Rett.**  
60x120 - 23<sup>5/8</sup>"x47<sup>1/4</sup>"  
E7QR Corten ● T31



**Naturale Rett.**  
30x60 - 11<sup>13/16</sup>"x23<sup>5/8</sup>"  
E37C Corten ● T14

Si consiglia la posa con fuga 2 mm. - Laying with a 2 mm-joint is recommended. - Pose recommandée avec joints de 2 mm. Es wird eine Fugenbreite von 2 mm empfohlen. - Se recomienda la colocación con juntas de 2 mm. - Рекомендуется укладка с швом 2 мм.

Verificare l'abbinamento dei toni tra i formati differenti. - Check the colour matching between different sizes. Vérifier l'assortiment des tonalités entre les différents formats. - Die Kombination der Farbtöne unter den verschiedenen Formaten prüfen. Comprobar la combinación de los tonos entre los distintos formatos. - Проверьте сочетание тонов у разных форматов.

**DECORI**

Decors | Decors | Dekore | Decorados | Декоры

**MOSAICO 3X3\***

Tessera - Chip 2,8x2,8 - 1<sup>1/8</sup>"x1<sup>1/8</sup>"








30x30 - 11<sup>13/16</sup>"x11<sup>13/16</sup>"

E3EJ Corten Nat. ● A96

\* Su rete in fibra - On fibre mesh backing  
Sur filet en fibre de verre - Auf Glasfasernetz  
Sobre malla de fibra - На волоконной сетке

**PEZZI SPECIALI**

Trims | Pieces Speciales | Formteile | Piezas Especiales | Специальные Изделия

	Dimensione Size		Fascia di prezzo Price band
	<b>Nat. Rett.</b> 7x120 - 2 <sup>3/4</sup> "x47 <sup>1/4</sup> " Pcs. Box 6 - LM x Box 7,20	Corten	● A28
 Battiscopa - Skirting	<b>Nat. Rett.</b> 4,6x120 - 1 <sup>13/16</sup> "x47 <sup>1/4</sup> " Pcs. Box 6 - LM x Box 7,20		● A28
 Gradino - Stair Tread	<b>Nat. Rett.</b> 33x120 - 12 <sup>15/16</sup> "x47 <sup>1/4</sup> " Pcs. Box 2 - LM x Box 2,40		● A82
 Gradone - Step	<b>Nat. Rett.</b> 33x120x3,2x3,2 12 <sup>15/16</sup> "x47 <sup>1/4</sup> "x1 <sup>1/4</sup> "x1 <sup>1/4</sup> " Pcs. Box 2 - LM x Box 2,40		● A98
 Angolare Dx   Sx Corner Tile Dx   Sx	<b>Nat. Rett.</b> 33x120x3,2x3,2 12 <sup>15/16</sup> "x47 <sup>1/4</sup> "x1 <sup>1/4</sup> "x1 <sup>1/4</sup> " Pcs. Box 1 - LM x Box 1,20	<b>DX</b> E9HZ	<b>SX</b> E9J0 ● A104

**IMBALLI E PESI**

Packing and Weight | Emballages et Poids | Verpackung und Gewicht | Embalajes y Pesos | Упаковка и Вес

Formato Size Format Format Тamaño Формат cm	Spessore Thickness Epaisseur Stärke Espesor Толщина mm	Pz. x Mq. Pieces x Sqm Pcs / M <sup>2</sup> Stk. x Qm Pzs x Mc. Шт x Кв.М.	Pz. x Scat. Pieces x Box Pcs / Bte Stk. x Krt. Pzs x Caja Шт x Кор.	Mq. x Scat. Sqm x Box M <sup>2</sup> / Bte Qm x Krt. Mc. x Caja Кв.М. x Кор.	Peso x Scat. Weight x Box Poids / Bte Gewicht x Krt. Peso x Caja Вес x Кор. Kg	Scat. x Pal. Boxes x Pal. Bte / Pal. Krt. x Pal. Cajas x Pal. Кор. x Подд.	Mq. x Pal. Sqm x Pal. M <sup>2</sup> / Pal. Qm x Pal. Mc. x Pal. Кв.М x Подд.	Peso x Pal. Weight x Pal. Poids / Pal. Gewicht x Pal. Peso x Pal. Вес x Подд. Kg
60x120 Naturale	9,5	1,39	2	1,440	31,68	36	51,84	1140
30x60 Naturale	9,5	5,56	6	1,080	23,76	48	51,84	1140
30x30 Mosaico 3X3 Naturale	9,5	11,11	5	0,450	8,73	60	27,00	524



# METAL style

Dry - Pressed Ceramic Tiles ISO 13006 Annex G - UNI EN 14411 Annex G - Bla UGL



<b>CARATTERISTICHE TECNICHE</b> Technical Features - Caracteristiques Techniques - Technische Eigenschaften Technische Eigenschaften - Características Técnicas - Технические Характеристики	<b>NORMA</b> Standard - Norme Norm - Norma - Норма	<b>VALORI</b> Value - Valeur Vorgabe - Valor - Средние
<b>ASSORBIMENTO D'ACQUA (VALORE MEDIO IN %)</b> Water absorption (Average value expressed in %) - Absorption d'eau (Valeur moyenne en %) Wasseraufnahme (Durchschnittswert in %) - Absorción de agua (Valor medio en %) Поглощение воды	UNI EN ISO 10545/3  ASTM C373	CONFORME  COMPLIANT
<b>RESISTENZA ALLA FLESSIONE</b> Modulus of rupture - Résistance à la flexion - Biegefestigkeit Resistencia a la flexion - Прочность на изгиб	UNI EN ISO 10545/4	≥ 45 N/mm <sup>2</sup>
<b>FORZA DI ROTTURA</b> Breaking strength - Résistance à la rupture - Bruchlast Resistencia a la rotura - Разрывное усилие	UNI EN ISO 10545/4  ASTM C648	≥ 2000 N  400 Lbs
<b>RESISTENZA AL GELO</b> Frost resistance - Résistance au gel - Frostbeständigkeit Resistencia a las heladas - Морозостойкость	UNI EN ISO 10545/12  ASTM C1026	CONFORME  UNAFFECTED
<b>RESISTENZA CHIMICA</b> <b>AD ALTE E BASSE CONCENTRAZIONI DI ACIDI E BASI</b> Chemical resistance to high and low acid and basic concentrations Résistance chimique aux hautes et basses concentrations d'acides et de bases Chemikalienfestigkeit bei hohen und niedrigen Konzentrationen von Säuren und Basen Resistencia química con concentraciones altas y bajas de ácidos y bases Химическая стойкость к высоким и низким концентрациям кислот и щелочей	UNI EN ISO 10545/13  ASTM C-650	A - LA - HA  UNAFFECTED
<b>RESISTENZA ALLE MACCHIE</b> Stain resistance - Résistance aux taches - Fleckenbeständigkeit Resistencia a las manchas - Стойкость к образованию пятен	UNI EN ISO 10545/14	5
<b>COEFFICIENTE DI ATTRITO</b> Slip resistance Coefficient de glissement Rutschfestigkeit Barfußbereich Coeficiente de atrito medio Коэффициент трения		<b>NATURALE</b>  DIN EN 16165 Annex B R10 DIN EN 16165 Annex A B (A+B) ANSI A326.3:2017 DCOF WET ≥ 0,50 B.C.R.A. D.M. N. 236 14/6/89 > 0,40 AS 4586-2013 Anexo A P2 BS 7976-2: 2002 BSEN13036-4:2011 Pendulum testers < 36 Moderate Slip potential UNE 41901:2017 EX DB SUA (actual) -

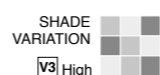
Per maggiori chiarimenti sui dati tecnici e sulla garanzia consultare il catalogo generale in vigore. - For further information on technical specifications, please consult our up-dated general catalogue. - Pour toutes informations supplémentaires sur les données techniques et sur les garanties, veuillez consulter le catalogue general en vigueur. - Für weitere Informationen über technische Daten und Garantie beziehen sie sich bitte auf den aktuellen Gesamtkatalog. - Para ulteriores informaciones sobre los datos técnicos y la garantía, vease el catalogo general en vigor. - Более подробную информацию о технических данных и гарантии смотрите в действующем сводном катал.



PRODUCT CERTIFIED FOR LOW CHEMICAL EMISSIONS: UL COM/FGG UL 2818



放射水平A类



I colori e le caratteristiche estetiche dei materiali illustrati nel presente catalogo sono da ritenersi puramente indicativi. Le misure dei prodotti qui indicate si intendono nominali e come i pesi ed i colori subiscono le variazioni tipiche del processo ceramico. Ergon si riserva la facoltà di modificare in qualunque momento senza preavviso le caratteristiche tecniche, estetiche e i materiali presentati. Tali caratteristiche non sono comunque vincolanti nei termini legali.

Colours and optical features of the materials illustrated in this catalogue are to be regarded as mere indications. Product sizes indicated are nominal and like weights and colours undergo the typical variations of the ceramic process. Ergon reserves the right to change the technical and optical features of the materials illustrated at any time and without notice. These features are not legally binding.



<b>Ergon is a brand of Emilceramica S.r.l. a socio unico</b>	<b>Sede Commerciale/ Amministrativa</b>
<a href="http://emilgroup.it/ergon">emilgroup.it/ergon</a> <a href="http://emilgroup.it">emilgroup.it</a>	Via Ghiarola Nuova, 29 - 41042 Fiorano Modenese (Mo) Italy T +39 0536 835111 - <a href="mailto:info@emilceramicagroup.it">info@emilceramicagroup.it</a>